

# PT PARTS



POWER TRANSMISSION PARTS

*Spare parts in-stock when you need them*

## Locking Bushes



[www.ptparts.com.au](http://www.ptparts.com.au)

# PTPARTS



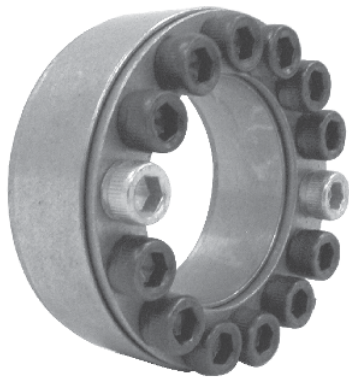
## Locking Bush Conversion Chart

| SIT (CAL) | TOLLOK (TLK) | Lovejoy (SLD) | MAV  | RINGFEDER (RFN) | RINGBLOK | BIKON   | COMPOMAC (Conex) | KTR (Clampex) |
|-----------|--------------|---------------|------|-----------------|----------|---------|------------------|---------------|
| CAL1      | 200          | 1500          | 2005 | 7012            | 1120     | 4000    | A                | 100           |
| CAL2      | 300          | 350           | 3003 | 8006            | 1060     | 5000    | C                | 150           |
| CAL3      | 110          | 1900          | 5061 | 7110.1          | 1100     | 8000    | B                | 250           |
| CAL4      | 450          | 2600          | 4061 | 7005            | 1800     | 1012    | F                | 400           |
| CAL5A     | 130          |               | 6901 | 7004            | 1300.1   | 7000A   | D                | 200           |
| CAL5B*    | 131          |               | 6902 | 7007            | 1300.2   | 7000B   | E                | 201           |
| CAL6      | 132          | 1850<br>1350  | 1062 | 7013.0<br>7003  | 1710     | 1003    | DS               | 203           |
| CAL7      | 133          | 1750<br>1450  | 1061 | 7013.1<br>7006  | 1720     | 1006    | ES               | 206           |
| CAL8*     | 134          |               | 3061 |                 | 2400     | 1506    | EP               | 225           |
| CAL9*     | 250          |               | 3505 |                 | 1500C    | 5500SP  | H                | 125           |
| CAL10*    | 500          |               | 1004 | 7020            | 1600     | 9500    | M                | 700           |
| CAL11S*   | 603          | 900           | 2008 | 4071            | 2200.01  | 1029.71 | SD               | 603           |
| CAL12S*   | 139          |               | 4005 | 9009            | 1000     | 4500    | L                | 90            |
| CAL13S*   | 250L         |               | 3705 |                 | 1500     | 5500S   | I                | 125.1         |
| CAL15*    | 350          |               |      | 7061            |          |         |                  | 105           |

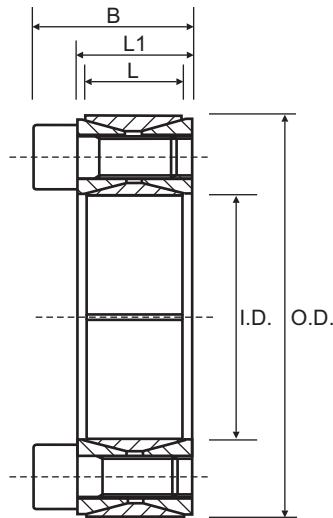
External diameters and torque ratings may vary between suppliers

\* Available on Request





**Characteristics**  
 Medium-high torque  
 Wide tolerances  
 Easy dismantling



## CAL1 (Not Self-Centering)

Cone clamping unit consists of four pieces with two inside double-cone rings joined through a set of tightening screws. It is recommended for medium to high torques and although it is not self-centering, it can be easily assembled and disassembled. Available for shaft diameters from 20 to 900 mm.

| Part No.       | I.D. | O.D. | L  | L1 | B  | Torque Nm | Axial Force N |
|----------------|------|------|----|----|----|-----------|---------------|
| CAL1--20/47    | 20   | 47   | 17 | 20 | 26 | 288       | 29000         |
| CAL1--22/47    | 22   | 47   | 17 | 20 | 26 | 317       | 29000         |
| CAL1--24/50    | 24   | 50   | 17 | 20 | 26 | 345       | 29000         |
| CAL1--25/50    | 25   | 50   | 17 | 20 | 26 | 360       | 29000         |
| CAL1--28/55    | 28   | 55   | 17 | 20 | 26 | 498       | 36000         |
| CAL1--30/55    | 30   | 55   | 17 | 20 | 26 | 533       | 36000         |
| CAL1--32/60    | 32   | 60   | 17 | 20 | 26 | 676       | 42000         |
| CAL1--35/60    | 35   | 60   | 17 | 20 | 26 | 739       | 42000         |
| CAL1--38/65    | 38   | 65   | 17 | 20 | 26 | 928       | 49000         |
| CAL1--40/65    | 40   | 65   | 17 | 20 | 26 | 977       | 49000         |
| CAL1--42/75    | 42   | 75   | 20 | 24 | 32 | 1587      | 76000         |
| CAL1--45/75    | 45   | 75   | 20 | 24 | 32 | 1701      | 76000         |
| CAL1--48/80    | 48   | 80   | 20 | 24 | 32 | 1814      | 76000         |
| CAL1--50/80    | 50   | 80   | 20 | 24 | 32 | 1889      | 76000         |
| CAL1--55/85    | 55   | 85   | 20 | 24 | 32 | 2397      | 87000         |
| CAL1--60/90    | 60   | 90   | 20 | 24 | 32 | 2615      | 87000         |
| CAL1--65/95    | 65   | 95   | 20 | 24 | 32 | 3204      | 99000         |
| CAL1--70/110   | 70   | 110  | 24 | 28 | 38 | 4589      | 131000        |
| CAL1--75/115   | 75   | 115  | 24 | 28 | 38 | 4917      | 131000        |
| CAL1--80/120   | 80   | 120  | 24 | 28 | 38 | 5245      | 131000        |
| CAL1--85/125 * | 85   | 125  | 24 | 28 | 38 | 6290      | 148000        |
| CAL1--90/130   | 90   | 130  | 24 | 28 | 38 | 6600      | 148000        |
| CAL1--95/135   | 95   | 135  | 24 | 28 | 38 | 7819      | 165000        |
| CAL1-100/145   | 100  | 145  | 26 | 33 | 45 | 9703      | 194000        |
| CAL1-110/155 * | 110  | 155  | 26 | 33 | 45 | 10673     | 194000        |
| CAL1-120/165   | 120  | 165  | 26 | 33 | 45 | 13262     | 221000        |
| CAL1-130/180 * | 130  | 180  | 34 | 38 | 50 | 17850     | 275000        |
| CAL1-140/190 * | 140  | 190  | 34 | 38 | 50 | 21089     | 301000        |
| CAL1-150/200 * | 150  | 200  | 34 | 38 | 50 | 24586     | 328000        |
| CAL1-160/210 * | 160  | 210  | 34 | 38 | 50 | 28343     | 354000        |
| CAL1-170/225 * | 170  | 225  | 38 | 44 | 58 | 33541     | 395000        |
| CAL1-180/235 * | 180  | 235  | 38 | 44 | 58 | 38636     | 429000        |
| CAL1-190/250 * | 190  | 250  | 46 | 52 | 66 | 47337     | 498000        |
| CAL1-200/260 * | 200  | 260  | 46 | 52 | 66 | 53261     | 533000        |
| CAL1-220/285 * | 220  | 285  | 50 | 56 | 72 | 68790     | 625000        |
| CAL1-240/305 * | 240  | 305  | 50 | 56 | 72 | 86127     | 718000        |
| CAL1-260/325 * | 260  | 325  | 50 | 56 | 72 | 105229    | 809000        |
| CAL1-280/355 * | 280  | 355  | 60 | 66 | 84 | 128456    | 918000        |
| CAL1-300/375 * | 300  | 375  | 60 | 66 | 84 | 154066    | 1027000       |

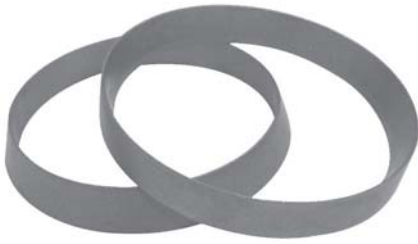
**Torque** = Maximum transmittable torque when axial force is zero.  
**Axial Force** = Maximum axial force when transmittable torque is zero.

**When using more than one CAL1 unit, the total transmittable torque is as follows:**

- 1 unit: Torque = Torque in table
- 2 unit: Torque = Torque in table X 1.9
- 3 unit: Torque = Torque in table X 2.7

**For CAL1 use the following tolerances**  
 h11 for the shaft  
 H11 for the hub

Sizes up to CAL1-900/1010 available on request  
 All dimensions in mm unless otherwise stated  
 \* Available on Request

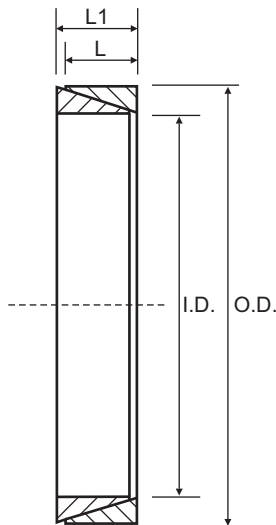


## CAL2 (Not Self-Centering)

Consists of two cone rings and must be equipped with a fastening flange, usually manufactured by the customer. The number of locking screws depends on the torque to be transmitted. It is not self-centering. CAL2 requires very small axial installation dimensions. Up to 4 units can be arranged behind each other, allowing high torques to be transmitted. Available for shaft diameters from 6 - 320 mm.

### Characteristics

Medium low torque  
Restricted radial encumbrance  
Quick installation  
Economical



| Part No.       | I.D. | O.D. | L    | L1   | Torque Nm | Axial Force N |
|----------------|------|------|------|------|-----------|---------------|
| CAL2--6/9 *    | 6    | 9    | 3.7  | 4.5  | 3         | 900           |
| CAL2--7/10 *   | 7    | 10   | 3.7  | 4.5  | 4         | 1100          |
| CAL2--8/11 *   | 8    | 11   | 3.7  | 4.5  | 5         | 1300          |
| CAL2--9/12 *   | 9    | 12   | 3.7  | 4.5  | 7         | 1600          |
| CAL2--10/13 *  | 10   | 13   | 3.7  | 4.5  | 10        | 2000          |
| CAL2--12/15 *  | 12   | 15   | 3.7  | 4.5  | 12        | 2000          |
| CAL2--13/16 *  | 13   | 16   | 3.7  | 4.5  | 14        | 2100          |
| CAL2--14/18 *  | 14   | 18   | 5.3  | 6.3  | 23        | 3300          |
| CAL2--15/19 *  | 15   | 19   | 5.3  | 6.3  | 27        | 3600          |
| CAL2--16/20 *  | 16   | 20   | 5.3  | 6.3  | 30        | 3800          |
| CAL2--17/21 *  | 17   | 21   | 5.3  | 6.3  | 33        | 3900          |
| CAL2--18/22 *  | 18   | 22   | 5.3  | 6.3  | 48        | 5300          |
| CAL2--19/24 *  | 19   | 24   | 5.3  | 6.3  | 43        | 4600          |
| CAL2--20/25 *  | 20   | 25   | 5.3  | 6.3  | 47        | 4700          |
| CAL2--22/26    | 22   | 26   | 5.3  | 6.3  | 61        | 5600          |
| CAL2--24/28 *  | 24   | 28   | 5.3  | 6.3  | 68        | 6130          |
| CAL2--25/30 *  | 25   | 30   | 5.3  | 6.3  | 75        | 6000          |
| CAL2--28/32    | 28   | 32   | 5.3  | 6.3  | 101       | 7200          |
| CAL2--30/35    | 30   | 35   | 5.3  | 6.3  | 105       | 7000          |
| CAL2--32/36    | 32   | 36   | 5.3  | 6.3  | 128       | 8000          |
| CAL2--35/40 *  | 35   | 40   | 6.0  | 7.0  | 171       | 9800          |
| CAL2--36/42 *  | 36   | 42   | 6.0  | 7.0  | 181       | 10100         |
| CAL2--38/44 *  | 38   | 44   | 6.0  | 7.0  | 207       | 10900         |
| CAL2--40/45    | 40   | 45   | 6.6  | 8.0  | 249       | 12500         |
| CAL2--42/48 *  | 42   | 48   | 6.6  | 8.0  | 278       | 13200         |
| CAL2--45/52    | 45   | 52   | 8.6  | 10.0 | 409       | 18200         |
| CAL2--48/55 *  | 48   | 55   | 8.6  | 10.0 | 455       | 19000         |
| CAL2--50/57    | 50   | 57   | 8.6  | 10.0 | 480       | 19200         |
| CAL2--55/62 *  | 55   | 62   | 8.6  | 10.0 | 601       | 21800         |
| CAL2--56/64 *  | 56   | 64   | 10.4 | 12.0 | 750       | 26800         |
| CAL2--60/68 *  | 60   | 68   | 10.4 | 12.0 | 883       | 29400         |
| CAL2--63/71 *  | 63   | 71   | 10.4 | 12.0 | 1005      | 31900         |
| CAL2--65/73    | 65   | 73   | 10.4 | 12.0 | 1044      | 32100         |
| CAL2--70/79 *  | 70   | 79   | 12.2 | 14.0 | 1392      | 39800         |
| CAL2--71/80 *  | 71   | 80   | 12.2 | 14.0 | 1491      | 42000         |
| CAL2--75/84    | 75   | 84   | 12.2 | 14.0 | 1628      | 43400         |
| CAL2--80/91    | 80   | 91   | 15.0 | 17.0 | 2240      | 56000         |
| CAL2--85/96    | 85   | 96   | 15.0 | 17.0 | 2593      | 61000         |
| CAL2--90/101 * | 90   | 101  | 15.0 | 17.0 | 2864      | 63600         |
| CAL2--95/106 * | 95   | 106  | 15.0 | 17.0 | 3153      | 66400         |
| CAL2-100/114 * | 100  | 114  | 18.7 | 21.0 | 4433      | 88700         |
| CAL2-110/124 * | 110  | 124  | 18.7 | 21.0 | 4999      | 90900         |
| CAL2-120/134 * | 120  | 134  | 18.7 | 21.0 | 5529      | 92200         |
| CAL2-130/148 * | 130  | 148  | 25.3 | 28.0 | 8720      | 134000        |
| CAL2-140/158 * | 140  | 158  | 25.3 | 28.0 | 10127     | 145000        |
| CAL2-150/168 * | 150  | 168  | 25.3 | 28.0 | 11750     | 157000        |

**Torque** = Maximum transmittable torque when axial force is zero.

**Axial Force** = Maximum axial force when transmittable torque is zero.

**When using more than one CAL2 unit, the total transmittable torque is as follows:**

- 1 unit: Torque = Torque in table
- 2 unit: Torque = Torque in table X 1.55
- 3 unit: Torque = Torque in table X 1.85
- 4 unit: Torque = Torque in table X 2.02

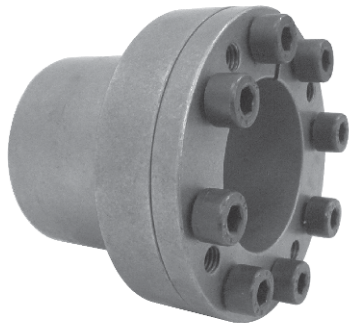
**For CAL2 use the following tolerances**  
h6 for the shaft - H7 for the hub  
(up to 40mm I.D.)  
h8 for the shaft - H8 for the hub  
(over 42mm I.D.)

Sizes up to CAL2-320/360 available on request.

All dimensions in mm unless otherwise stated

\* Available on Request



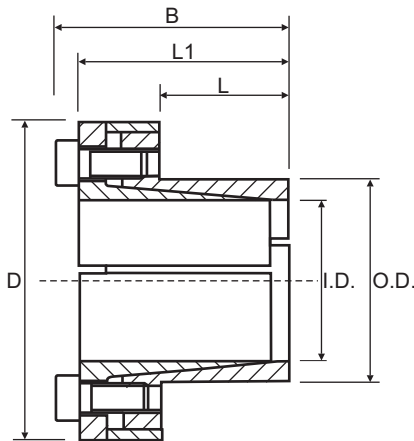


## CAL3 (Self-Centering)

Consists of two conical pieces and a spacer. It has minimum overall dimensions in virtue of the reduced thickness of the cones; so, CAL3 is suitable for the applications where small hubs are used. It is recommended for medium to high torques and is self-centering. CAL3 guarantees a very precise axial positioning, as no axial displacement of the hub occurs during the assembly operation. Available for shaft diameters from 6 to 130 mm.

### Characteristics

- Medium-high torque
- Restricted hub diameter
- Quick installation
- Very low surface pressure



**Torque** = Maximum transmittable torque when axial force is zero.

**Axial Force** = Maximum axial force when transmittable torque is zero.

### For CAL3 use the following tolerances

h8 for the shaft  
H8 for the hub

| Part No.      | I.D. | O.D. | L  | L1  | B   | D   | Torque Nm | Axial Force N |
|---------------|------|------|----|-----|-----|-----|-----------|---------------|
| CAL3---6/14   | 6    | 14   | 10 | 21  | 24  | 25  | 12        | 4000          |
| CAL3---7/15 * | 7    | 15   | 12 | 25  | 29  | 27  | 26        | 7000          |
| CAL3---8/15   | 8    | 15   | 12 | 25  | 29  | 27  | 30        | 7000          |
| CAL3---9/16   | 9    | 16   | 14 | 26  | 30  | 28  | 44        | 10000         |
| CAL3--10/16   | 10   | 16   | 14 | 26  | 30  | 28  | 49        | 10000         |
| CAL3--11/18   | 11   | 18   | 14 | 26  | 30  | 32  | 54        | 10000         |
| CAL3--12/18   | 12   | 18   | 14 | 26  | 30  | 32  | 59        | 10000         |
| CAL3--13/23 * | 13   | 23   | 14 | 26  | 30  | 38  | 64        | 10000         |
| CAL3--14/23   | 14   | 23   | 14 | 26  | 30  | 38  | 69        | 10000         |
| CAL3--15/24   | 15   | 24   | 16 | 36  | 42  | 45  | 128       | 17000         |
| CAL3--16/24   | 16   | 24   | 16 | 36  | 42  | 45  | 136       | 17000         |
| CAL3--17/26   | 17   | 26   | 18 | 38  | 44  | 47  | 193       | 23000         |
| CAL3--18/26   | 18   | 26   | 18 | 38  | 44  | 47  | 205       | 23000         |
| CAL3--19/27   | 19   | 27   | 18 | 38  | 44  | 49  | 216       | 23000         |
| CAL3--20/28   | 20   | 28   | 18 | 38  | 44  | 50  | 227       | 23000         |
| CAL3--22/32   | 22   | 32   | 25 | 45  | 51  | 54  | 250       | 23000         |
| CAL3--24/34   | 24   | 34   | 25 | 45  | 51  | 56  | 273       | 23000         |
| CAL3--25/34   | 25   | 34   | 25 | 45  | 51  | 56  | 284       | 23000         |
| CAL3--28/39   | 28   | 39   | 25 | 45  | 51  | 61  | 478       | 34000         |
| CAL3--30/41   | 30   | 41   | 25 | 45  | 51  | 62  | 512       | 34000         |
| CAL3--32/43   | 32   | 43   | 25 | 45  | 51  | 65  | 546       | 34000         |
| CAL3--35/47   | 35   | 47   | 32 | 52  | 58  | 69  | 796       | 45000         |
| CAL3--38/50   | 38   | 50   | 32 | 52  | 58  | 72  | 864       | 45000         |
| CAL3--40/53   | 40   | 53   | 32 | 52  | 58  | 75  | 910       | 45000         |
| CAL3--42/55   | 42   | 55   | 32 | 52  | 58  | 78  | 955       | 45000         |
| CAL3--45/59   | 45   | 59   | 45 | 70  | 78  | 86  | 1891      | 84000         |
| CAL3--48/62   | 48   | 62   | 45 | 70  | 78  | 87  | 2017      | 84000         |
| CAL3--50/65   | 50   | 65   | 45 | 70  | 78  | 92  | 2101      | 84000         |
| CAL3--55/71   | 55   | 71   | 55 | 80  | 88  | 98  | 2600      | 95000         |
| CAL3--60/77   | 60   | 77   | 55 | 80  | 88  | 104 | 2836      | 95000         |
| CAL3--65/84   | 65   | 84   | 55 | 80  | 88  | 111 | 3073      | 95000         |
| CAL3--70/90   | 70   | 90   | 65 | 96  | 106 | 119 | 5254      | 150000        |
| CAL3--75/95   | 75   | 95   | 65 | 96  | 106 | 126 | 5630      | 150000        |
| CAL3--80/100  | 80   | 100  | 65 | 96  | 106 | 131 | 8006      | 200000        |
| CAL3--85/106  | 85   | 106  | 65 | 96  | 106 | 137 | 8507      | 200000        |
| CAL3--90/112  | 90   | 112  | 65 | 96  | 106 | 144 | 9007      | 200000        |
| CAL3--95/120  | 95   | 120  | 65 | 96  | 106 | 149 | 11092     | 234000        |
| CAL3-100/125  | 100  | 125  | 65 | 96  | 106 | 154 | 15012     | 300000        |
| CAL3-110/140  | 110  | 140  | 90 | 128 | 140 | 180 | 16029     | 291000        |
| CAL3-120/155  | 120  | 155  | 90 | 128 | 140 | 198 | 17486     | 291000        |
| CAL3-130/165  | 130  | 165  | 90 | 128 | 140 | 208 | 25257     | 389000        |

All dimensions in mm unless otherwise stated

\* Available on Request

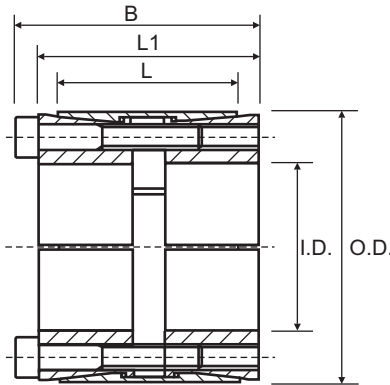


## CAL4 (Self-Centering)

Consists of one biconic ring and two truncated cone rings. It is suitable for very high torques and is self-centering. Ideal for conveyors and many other machine applications. Available for shaft diameter from 25 to 400 mm.

### Characteristics

Very high torques  
Capacity to withstand bending moments  
Standard sizes



**Torque** = Maximum transmittable torque when axial force is zero.  
**Axial Force** = Maximum axial force when transmittable torque is zero.

**For CAL4 use the following tolerances:**

h8 for the shaft  
H8 for the hub

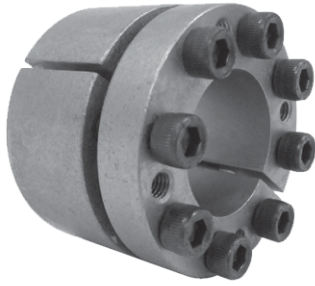
| Part No.       | I.D. | O.D. | L   | L1  | B   | Torque Nm | Axial Force N |
|----------------|------|------|-----|-----|-----|-----------|---------------|
| CAL4--25/50    | 25   | 50   | 41  | 45  | 51  | 830       | 66000         |
| CAL4--28/55    | 28   | 55   | 41  | 45  | 51  | 1239      | 89000         |
| CAL4--30/55    | 30   | 55   | 41  | 45  | 51  | 1328      | 89000         |
| CAL4--35/60    | 35   | 60   | 41  | 45  | 51  | 1549      | 89000         |
| CAL4--38/65    | 38   | 65   | 41  | 45  | 51  | 1682      | 89000         |
| CAL4--40/65    | 40   | 65   | 41  | 45  | 51  | 2213      | 111000        |
| CAL4--42/75    | 42   | 75   | 41  | 45  | 53  | 3435      | 164000        |
| CAL4--45/75    | 45   | 75   | 41  | 45  | 53  | 3680      | 164000        |
| CAL4--48/80    | 48   | 80   | 58  | 62  | 70  | 3926      | 164000        |
| CAL4--50/80    | 50   | 80   | 58  | 62  | 70  | 4089      | 164000        |
| CAL4--55/85    | 55   | 85   | 58  | 62  | 70  | 4498      | 164000        |
| CAL4--60/90    | 60   | 90   | 58  | 62  | 70  | 6134      | 204000        |
| CAL4--65/95    | 65   | 95   | 58  | 62  | 70  | 6645      | 204000        |
| CAL4--70/110   | 70   | 110  | 70  | 76  | 86  | 11363     | 325000        |
| CAL4--75/115   | 75   | 115  | 70  | 76  | 86  | 12174     | 325000        |
| CAL4--80/120   | 80   | 120  | 70  | 76  | 86  | 15583     | 390000        |
| CAL4--85/125   | 85   | 125  | 70  | 76  | 86  | 16557     | 390000        |
| CAL4--90/130   | 90   | 130  | 70  | 76  | 86  | 17531     | 390000        |
| CAL4--95/135   | 95   | 135  | 70  | 76  | 86  | 18505     | 390000        |
| CAL4-100/145   | 100  | 145  | 92  | 98  | 110 | 28361     | 567000        |
| CAL4-110/155   | 110  | 155  | 92  | 98  | 110 | 31197     | 567000        |
| CAL4-120/165   | 120  | 165  | 92  | 98  | 110 | 39706     | 662000        |
| CAL4-130/180 * | 130  | 180  | 108 | 114 | 128 | 50589     | 778000        |
| CAL4-140/190 * | 140  | 190  | 108 | 114 | 128 | 63560     | 908000        |
| CAL4-150/200 * | 150  | 200  | 108 | 114 | 128 | 77829     | 1038000       |
| CAL4-160/210 * | 160  | 210  | 108 | 114 | 128 | 83017     | 1038000       |
| CAL4-170/225 * | 170  | 225  | 136 | 146 | 162 | 107267    | 1262000       |
| CAL4-180/235 * | 180  | 235  | 136 | 146 | 162 | 129802    | 1442000       |
| CAL4-190/250 * | 190  | 250  | 136 | 146 | 162 | 137014    | 1442000       |
| CAL4-200/260 * | 200  | 260  | 136 | 146 | 162 | 144225    | 1442000       |
| CAL4-220/285 * | 220  | 285  | 136 | 146 | 162 | 198309    | 1803000       |
| CAL4-240/305 * | 240  | 305  | 136 | 146 | 162 | 237971    | 1983000       |
| CAL4-260/325 * | 260  | 325  | 136 | 146 | 162 | 257802    | 1983000       |
| CAL4-280/355 * | 280  | 355  | 138 | 148 | 168 | 393980    | 2814000       |
| CAL4-300/375 * | 300  | 375  | 165 | 177 | 197 | 464334    | 3096000       |

Sizes up to CAL4-400/495 available on request.

All dimensions in mm unless otherwise stated

\*Available on Request



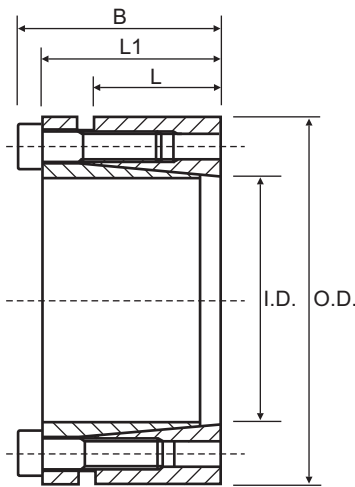


## CAL5A (Self-Centering)

Consists of one inside and one outside cone ring, which are joined by a set of screws. It is suitable for high torques and is self-centering. Applications which require a very precise axial positioning are not recommended, owing to a small axial displacement of the hub during the assembly operation. Available for shaft diameters from 18 to 220 mm.

### Characteristics

High torque  
Economical  
Quick installation



| Part No.        | I.D. | O.D. | L  | L1 | B   | Torque<br>Nm | Axial Force<br>N |
|-----------------|------|------|----|----|-----|--------------|------------------|
| CAL5A-20/47     | 20   | 47   | 26 | 43 | 49  | 547          | 55000            |
| CAL5A-22/47     | 22   | 47   | 26 | 43 | 49  | 602          | 55000            |
| CAL5A-24/50     | 24   | 50   | 26 | 43 | 49  | 657          | 55000            |
| CAL5A-25/50     | 25   | 50   | 26 | 43 | 49  | 684          | 55000            |
| CAL5A-28/55     | 28   | 55   | 26 | 43 | 49  | 766          | 55000            |
| CAL5A-30/55     | 30   | 55   | 26 | 43 | 49  | 821          | 55000            |
| CAL5A-32/60     | 32   | 60   | 26 | 43 | 49  | 1313         | 82000            |
| CAL5A-35/60     | 35   | 60   | 26 | 43 | 49  | 1436         | 82000            |
| CAL5A-38/65     | 38   | 65   | 26 | 43 | 49  | 1559         | 82000            |
| CAL5A-40/65     | 40   | 65   | 26 | 43 | 49  | 1641         | 82000            |
| CAL5A-42/75     | 42   | 75   | 30 | 52 | 60  | 2123         | 101000           |
| CAL5A-45/75     | 45   | 75   | 30 | 52 | 60  | 2275         | 101000           |
| CAL5A-48/80     | 48   | 80   | 30 | 52 | 60  | 2426         | 101000           |
| CAL5A-50/80     | 50   | 80   | 30 | 52 | 60  | 2527         | 101000           |
| CAL5A-55/85     | 55   | 85   | 30 | 52 | 60  | 4170         | 152000           |
| CAL5A-60/90     | 60   | 90   | 30 | 52 | 60  | 4549         | 152000           |
| CAL5A-65/95     | 65   | 95   | 30 | 52 | 60  | 4928         | 152000           |
| CAL5A-70/110 *  | 70   | 110  | 40 | 57 | 67  | 6555         | 187000           |
| CAL5A-75/115 *  | 75   | 115  | 40 | 57 | 67  | 7023         | 187000           |
| CAL5A-80/120 *  | 80   | 120  | 40 | 57 | 67  | 7491         | 187000           |
| CAL5A-85/125 *  | 85   | 125  | 40 | 57 | 67  | 9096         | 214000           |
| CAL5A-90/130    | 90   | 130  | 40 | 57 | 67  | 9631         | 214000           |
| CAL5A-95/135    | 95   | 135  | 40 | 57 | 67  | 12708        | 268000           |
| CAL5A-100/145 * | 100  | 145  | 46 | 66 | 78  | 13634        | 273000           |
| CAL5A-110/155 * | 110  | 155  | 45 | 68 | 80  | 17931        | 326000           |
| CAL5A-120/165 * | 120  | 165  | 45 | 68 | 80  | 24452        | 408000           |
| CAL5A-130/180 * | 130  | 180  | 45 | 68 | 80  | 31787        | 489000           |
| CAL5A-140/190 * | 140  | 190  | 50 | 76 | 90  | 39141        | 559000           |
| CAL5A-150/200 * | 150  | 200  | 50 | 76 | 90  | 50325        | 671000           |
| CAL5A-160/210 * | 160  | 210  | 50 | 76 | 90  | 53680        | 671000           |
| CAL5A-170/225 * | 170  | 225  | 50 | 76 | 90  | 66540        | 783000           |
| CAL5A-180/235 * | 180  | 235  | 50 | 76 | 90  | 70455        | 783000           |
| CAL5A-190/250 * | 190  | 250  | 50 | 76 | 90  | 76000        | 802000           |
| CAL5A-200/260 * | 200  | 260  | 50 | 76 | 90  | 80000        | 802000           |
| CAL5A-220/285 * | 220  | 285  | 64 | 90 | 106 | 98000        | 891000           |

**Torque** = Maximum transmittable torque when axial force is zero.

**Axial Force** = Maximum axial force when transmittable torque is zero.

### For CAL5A use the following tolerances

h8 for the shaft  
H8 for the hub

All dimensions in mm unless otherwise stated

\*Available on Request

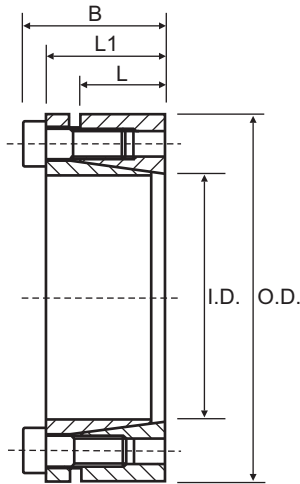


## CAL6 (Self-Centering)

Consists of one inside and one outside cone ring, which are joined by a set of screws. It is suitable for medium to high torques and is self-centering. Applications which require a very precise axial positioning are not recommended, owing to a small axial displacement of the hub during the assembly operation. Available for shaft diameters from 18 to 200 mm.

### Characteristics

Medium-high torque  
Economical  
Quick installation



| Part No.       | I.D. | O.D. | L  | L1 | B  | Torque Nm | Axial Force N |
|----------------|------|------|----|----|----|-----------|---------------|
| CAL6--20/47    | 20   | 47   | 17 | 28 | 34 | 380       | 38000         |
| CAL6--22/47    | 22   | 47   | 17 | 28 | 34 | 419       | 38000         |
| CAL6--24/50    | 24   | 50   | 17 | 28 | 34 | 457       | 38000         |
| CAL6--25/50    | 25   | 50   | 17 | 28 | 34 | 571       | 46000         |
| CAL6--28/55    | 28   | 55   | 17 | 28 | 34 | 639       | 46000         |
| CAL6--30/55 *  | 30   | 55   | 17 | 28 | 34 | 685       | 46000         |
| CAL6--32/60 *  | 32   | 60   | 17 | 28 | 34 | 974       | 61000         |
| CAL6--35/60 *  | 35   | 60   | 17 | 28 | 34 | 1065      | 61000         |
| CAL6--38/65    | 38   | 65   | 17 | 28 | 34 | 1157      | 61000         |
| CAL6--40/65    | 40   | 65   | 17 | 28 | 34 | 1218      | 61000         |
| CAL6--42/75    | 42   | 75   | 20 | 34 | 42 | 2060      | 98000         |
| CAL6--45/75    | 45   | 75   | 20 | 34 | 42 | 2207      | 98000         |
| CAL6--48/80    | 48   | 80   | 20 | 34 | 42 | 2354      | 98000         |
| CAL6--50/80    | 50   | 80   | 20 | 34 | 42 | 2452      | 98000         |
| CAL6--55/85    | 55   | 85   | 20 | 34 | 42 | 3082      | 112000        |
| CAL6--60/90    | 60   | 90   | 20 | 34 | 42 | 3363      | 112000        |
| CAL6--65/95    | 65   | 95   | 20 | 34 | 42 | 4098      | 126000        |
| CAL6--70/110   | 70   | 110  | 24 | 40 | 50 | 6240      | 178000        |
| CAL6--75/115   | 75   | 115  | 24 | 40 | 50 | 6685      | 178000        |
| CAL6--80/120   | 80   | 120  | 24 | 40 | 50 | 7131      | 178000        |
| CAL6--85/125 * | 85   | 125  | 24 | 40 | 50 | 8524      | 201000        |
| CAL6--90/130   | 90   | 130  | 24 | 40 | 50 | 9025      | 201000        |
| CAL6--95/135 * | 95   | 135  | 24 | 40 | 50 | 10585     | 223000        |
| CAL6-100/145 * | 100  | 145  | 26 | 44 | 56 | 13045     | 261000        |
| CAL6-110/155 * | 110  | 155  | 26 | 44 | 56 | 14349     | 261000        |
| CAL6-120/165 * | 120  | 165  | 26 | 44 | 56 | 17610     | 294000        |
| CAL6-130/180 * | 130  | 180  | 34 | 54 | 66 | 25437     | 391000        |
| CAL6-140/190 * | 140  | 190  | 34 | 54 | 68 | 28155     | 402000        |
| CAL6-150/200 * | 150  | 200  | 34 | 54 | 68 | 33518     | 447000        |
| CAL6-160/210 * | 160  | 210  | 34 | 54 | 68 | 38327     | 492000        |
| CAL6-170/225 * | 170  | 225  | 44 | 64 | 78 | 45584     | 536000        |
| CAL6-180/235 * | 180  | 235  | 44 | 64 | 78 | 48265     | 536000        |
| CAL6-190/250 * | 190  | 250  | 44 | 64 | 78 | 63683     | 670000        |
| CAL6-200/260 * | 200  | 260  | 44 | 64 | 78 | 67035     | 670000        |

**Torque** = Maximum transmittable torque when axial force is zero.

**Axial Force** = Maximum axial force when transmittable torque is zero.

### For CAL6 use the following tolerances

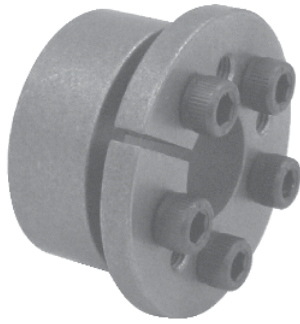
h8 for the shaft

H8 for the hub

All dimensions in mm unless otherwise stated

\* Available on Request



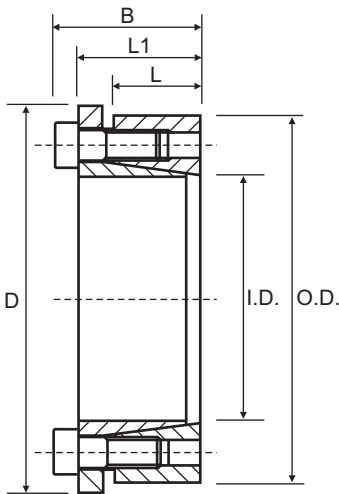


## CAL7 (Self-Centering)

Consists of one inside and one outside cone ring, which are joined by a set of screws. It is suitable for medium to high torques and is self-centering. Applications which require a very precise axial positioning are not recommended. Available for shaft diameters from 18 to 200 mm.

### Characteristics

Medium-high torque  
Economical  
Quick installation



**Torque** = Maximum transmittable torque when axial force is zero.

**Axial Force** = Maximum axial force when transmittable torque is zero.

### For CAL7 use the following tolerances

h8 for the shaft

H8 for the hub

| Part No.     | I.D. | O.D. | L  | L1 | B  | D   | Torque<br>Nm | Axial Force<br>N |
|--------------|------|------|----|----|----|-----|--------------|------------------|
| CAL7--18/47* | 18   | 47   | 17 | 28 | 34 | 54  | 250          | 28000            |
| CAL7--20/47  | 20   | 47   | 17 | 28 | 34 | 56  | 284          | 28000            |
| CAL7--22/47  | 22   | 47   | 17 | 28 | 34 | 56  | 313          | 28000            |
| CAL7--24/50  | 24   | 50   | 17 | 28 | 34 | 59  | 341          | 28000            |
| CAL7--25/50  | 25   | 50   | 17 | 28 | 34 | 59  | 426          | 34000            |
| CAL7--28/55  | 28   | 55   | 17 | 28 | 34 | 64  | 478          | 34000            |
| CAL7--30/55  | 30   | 55   | 17 | 28 | 34 | 64  | 512          | 34000            |
| CAL7--32/60  | 32   | 60   | 17 | 28 | 34 | 69  | 728          | 45000            |
| CAL7--35/60  | 35   | 60   | 17 | 28 | 34 | 69  | 796          | 45000            |
| CAL7--38/65  | 38   | 65   | 17 | 28 | 34 | 74  | 864          | 45000            |
| CAL7--40/65  | 40   | 65   | 17 | 28 | 34 | 74  | 910          | 45000            |
| CAL7--42/75  | 42   | 75   | 20 | 33 | 42 | 84  | 1544         | 74000            |
| CAL7--45/75  | 45   | 75   | 20 | 33 | 42 | 84  | 1655         | 74000            |
| CAL7--48/80  | 48   | 80   | 20 | 33 | 42 | 89  | 1765         | 74000            |
| CAL7--50/80  | 50   | 80   | 20 | 33 | 42 | 89  | 1838         | 74000            |
| CAL7--55/85  | 55   | 85   | 20 | 33 | 42 | 94  | 2311         | 84000            |
| CAL7--60/90  | 60   | 90   | 20 | 33 | 42 | 99  | 2521         | 84000            |
| CAL7--65/95  | 65   | 95   | 20 | 33 | 42 | 104 | 3093         | 95000            |
| CAL7--70/110 | 70   | 110  | 24 | 40 | 50 | 119 | 4670         | 133000           |
| CAL7--75/115 | 75   | 115  | 24 | 40 | 50 | 124 | 5004         | 133000           |
| CAL7--80/120 | 80   | 120  | 24 | 40 | 50 | 129 | 5338         | 133000           |
| CAL7--85/125 | 85   | 125  | 24 | 40 | 50 | 134 | 6380         | 150000           |
| CAL7--90/130 | 90   | 130  | 24 | 40 | 50 | 139 | 6755         | 150000           |
| CAL7--95/135 | 95   | 135  | 24 | 40 | 50 | 144 | 7923         | 167000           |
| CAL7-100/145 | 100  | 145  | 26 | 44 | 56 | 154 | 9714         | 194000           |
| CAL7-110/155 | 110  | 155  | 26 | 44 | 56 | 164 | 10686        | 194000           |
| CAL7-120/165 | 120  | 165  | 26 | 44 | 56 | 174 | 13114        | 219000           |
| CAL7-130/180 | 130  | 180  | 34 | 54 | 66 | 189 | 18943        | 291000           |
| CAL7-140/190 | 140  | 190  | 34 | 54 | 68 | 199 | 20993        | 300000           |
| CAL7-150/200 | 150  | 200  | 34 | 54 | 68 | 209 | 24992        | 333000           |
| CAL7-160/210 | 160  | 210  | 34 | 54 | 68 | 219 | 29324        | 367000           |
| CAL7-170/225 | 170  | 225  | 44 | 64 | 78 | 234 | 33989        | 400000           |
| CAL7-180/235 | 180  | 235  | 44 | 64 | 78 | 244 | 35989        | 400000           |
| CAL7-190/250 | 190  | 250  | 44 | 64 | 78 | 259 | 47485        | 500000           |
| CAL7-200/260 | 200  | 260  | 44 | 64 | 78 | 269 | 49984        | 500000           |

\* Discontinued size, Limited stock available  
All dimensions in mm unless otherwise stated